



**Customer:** Employee Housing

**Location:** Watford City, ND

**Size:** 4,598 sq. ft.

**Award Date:** April 2012

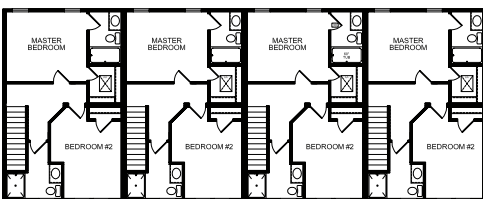
**Completion Date:** June 2012

**Days to Complete:** 59

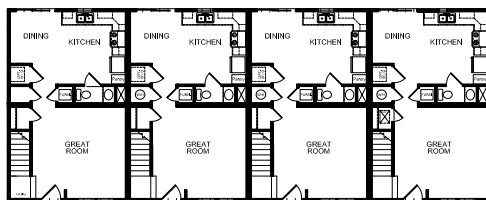
**Description**

A National Oil & Gas firm requiring employee housing in a small urban town in North Dakota, elected to build permanent structures with hometown aesthetics where current oil booms typically result in less desirable housing. Modular construction was ideal for the situation considering speed, quality and the shortage of local labor. Two townhomes were erected with each townhome consisting of four 15' x 76' modules for a total of 4,598 SF. Each dwelling is designed to house a family or multiple workers. Each bedroom has a full bath with a half bath downstairs.

BOXX Modular provided a turn-key project including utilities, septic systems and engineered foundations. The site was designed to allow minimal geographical changes in elevation keeping the site as natural as possible. This location required a deep foundation to be engineered and utilizes a unique spray forming insulation in the crawl space to protect the piping. The modules were designed to favor minimal on-site construction. The project was managed on-site by BOXX Modular employees and included the coordination of modular placement while craning to expedite the construction time.



Second Floor



First Floor

- Award Winning Designs
- Quality Construction
- Free Design Consultation
- Purchase or Lease to Own

[www.boxxmodularus.com](http://www.boxxmodularus.com)

BOXX Modular is a division of Black Diamond Group